

form



Brought to you by:



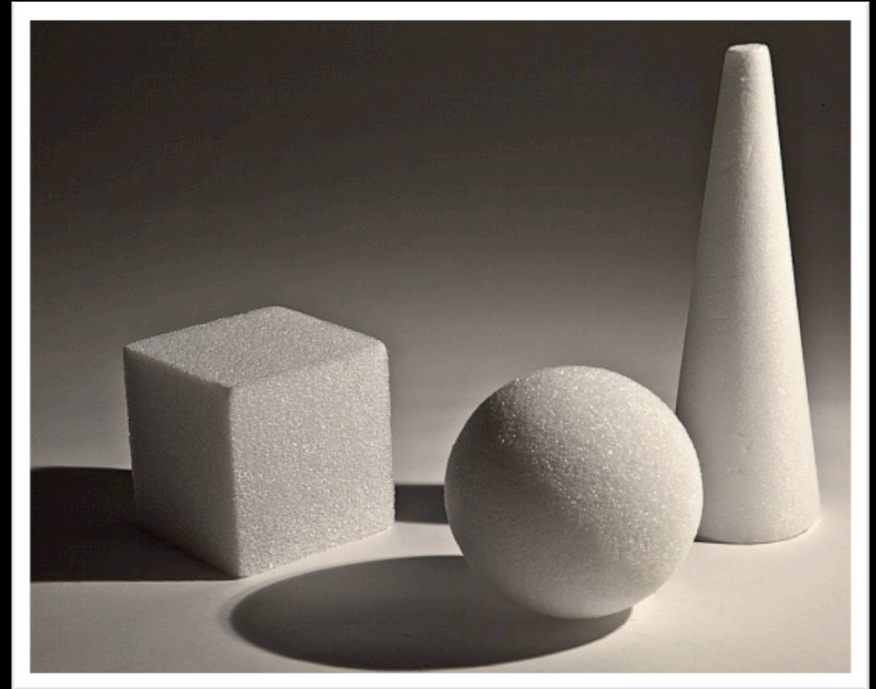
refrigeratorgood.com

artwork worthy of a magnet.

Form is...

-One of the 7 **Art elements**.

-A three-dimensional geometrical figure

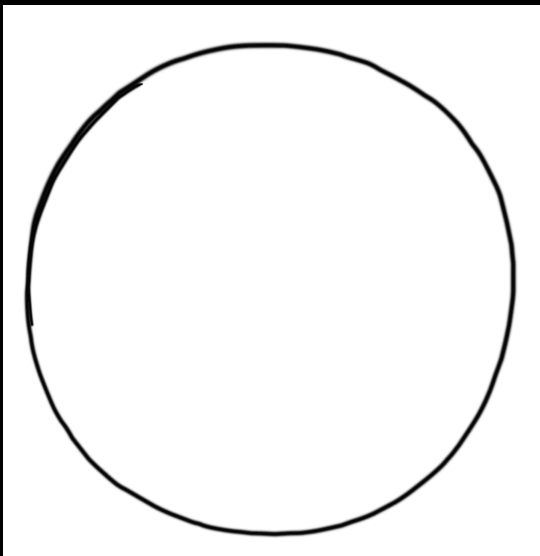


Shape

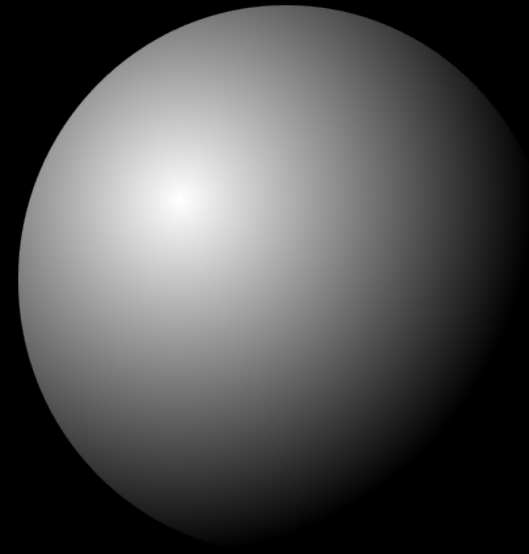
vs.

Form

BOTH ARE one of the 7 ART ELEMENTS



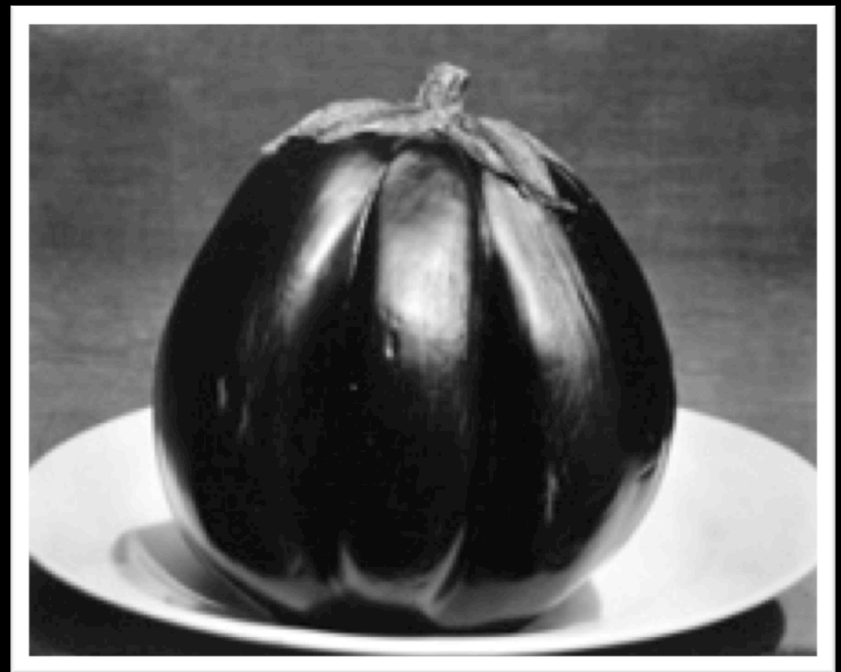
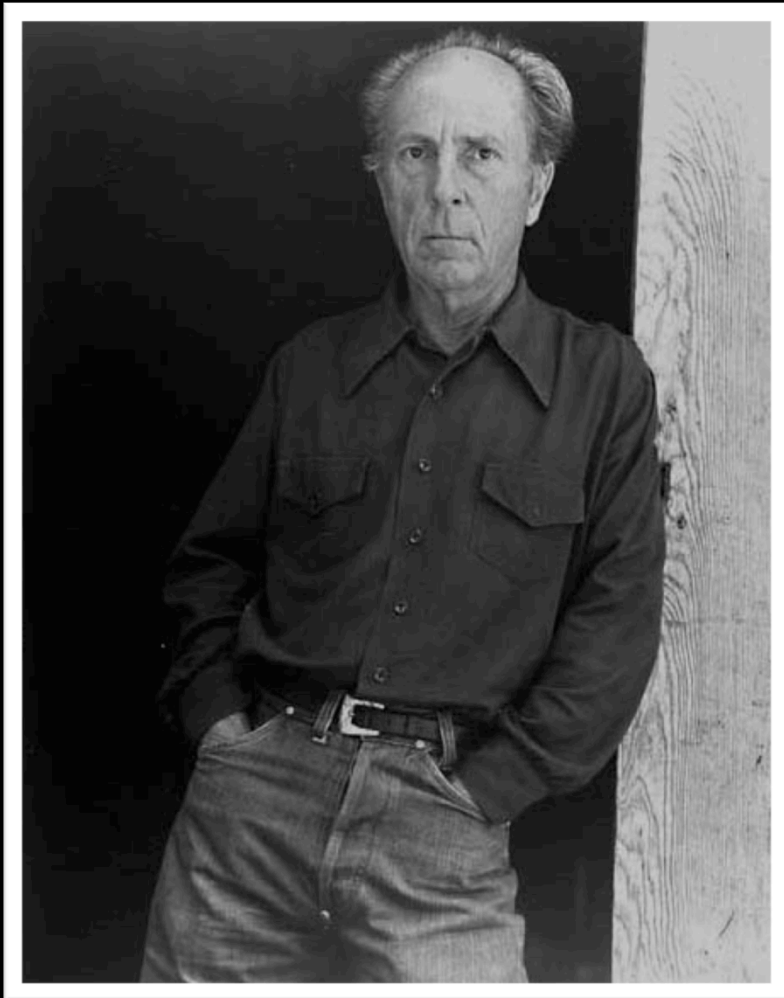
- A shape is created when a line is enclosed.
- 2- dimensional
- Width height



- A form encloses volume
- 3- dimensional
- Width, height, depth

Edward Weston?

"The most influential American Photographer of the Twentieth Century"



Early years

- Born in Highland Park, Illinois. In 1902.
- Received his first camera for his sixteenth birthday, a Kodak Bull's-Eye #2, and began taking photographs in parks in Chicago and at his aunt's farm.
- One year later his work was exhibited at the Chicago Art Institute → in 1903.



Photographic career



- 1906 moved to California, to pursue a career as a portrait photographer.
- 1909 married wife #1 Flora
- 1911 Opened his first photographic studio in Tropic, California & wrote articles about his unconventional methods of portraiture.

Changes

- 1922 Weston began to favor a straight type of pictorial photography, he began regular visits to Mexico with his professional and romantic lady #2/ partner → Tina Modotti. {their relationship was gossiped about}



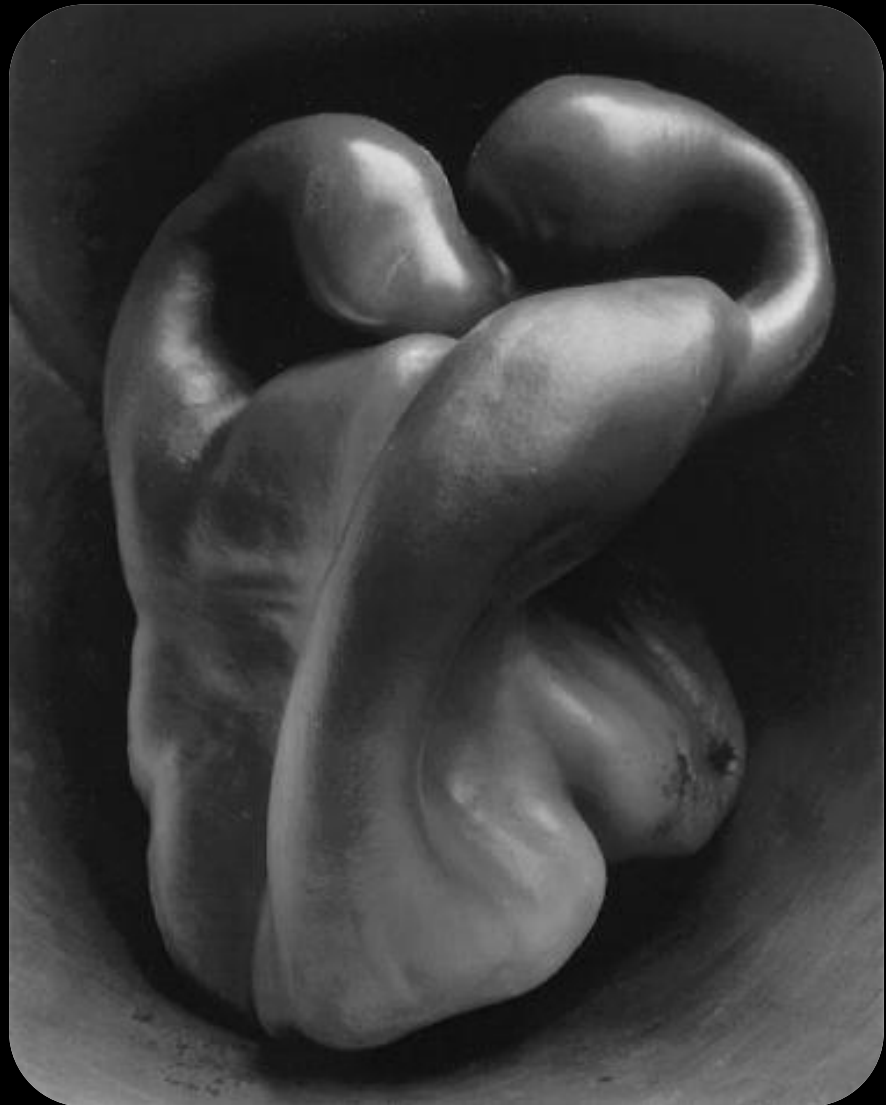
The subjects



- 1927, Weston chose mainly nudes, but also shells and vegetables, as his subject matter.
- 1937, the first photographer to win Guggenheim fellowship award
- 1948 career as a photographer ended due to Parkinson's disease.

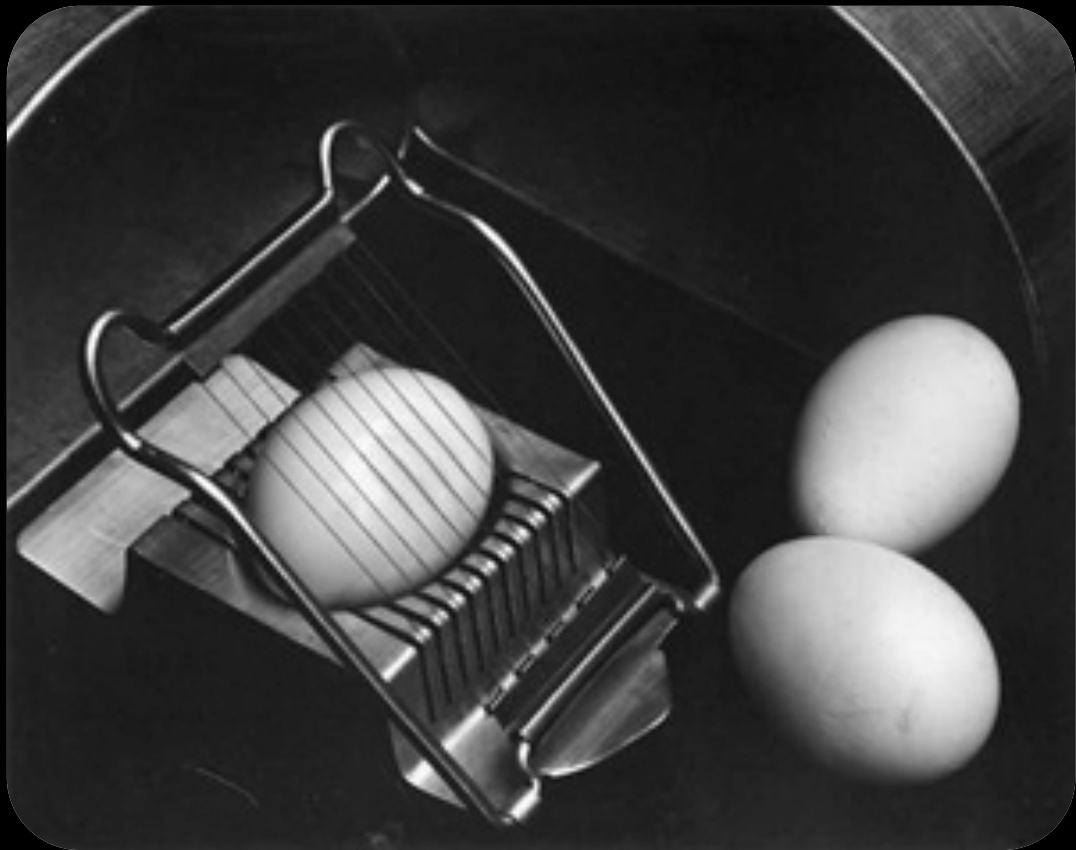
The “buzz”

- *‘Weston’s series of monumental close-ups of seashells, peppers, and halved cabbages, brought out the rich textures of their sculpture-like forms.’*



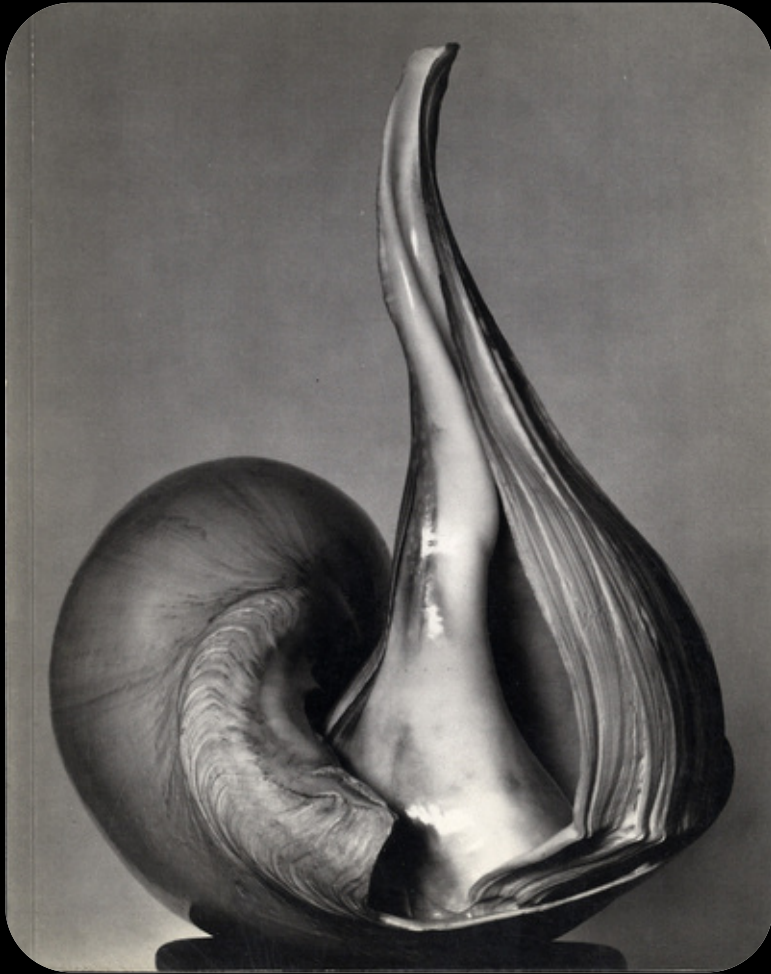
Images of Edward Weston's work







In his own words



- Anything that excites me for any reason, I will photograph; not searching for unusual subject matter, but making the commonplace unusual.
Edward Weston

Examples of Form photographs















Weekend shooting: 7 images of a *cube-like form*
7 images of a *cone-like form*
7 images of a *sphere-like form*

*** All images should be well lit and taken using natural or artificial light***