

# Texture



Brought to you by:

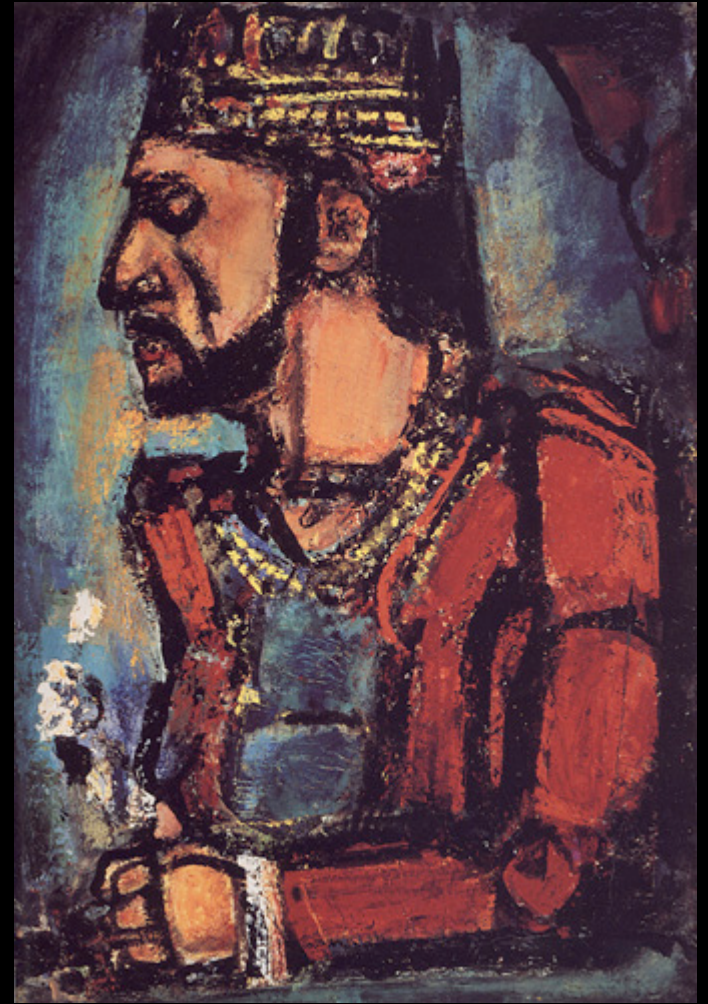


refrigeratorgood.com

*artwork worthy of a magnet.*

# Texture is...

Texture is the **actual surface feel** of an area or the **simulated appearance** of roughness or smoothness.

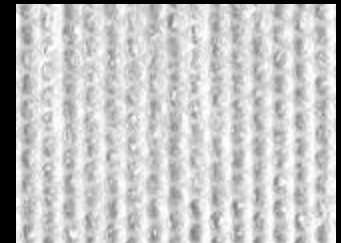
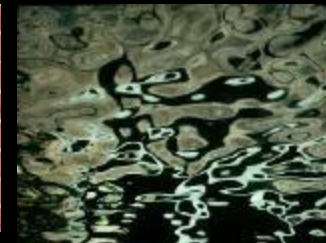
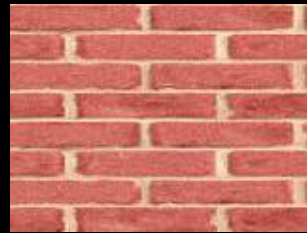
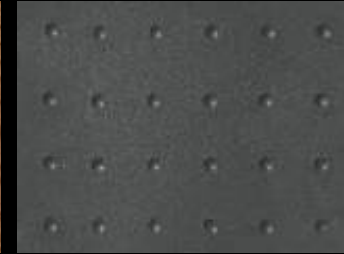


*"The Old King"* by George Roualt, 1916-36, Oil, Carnegie Museum of Art



# WHERE DO WE FIND TEXTURE?

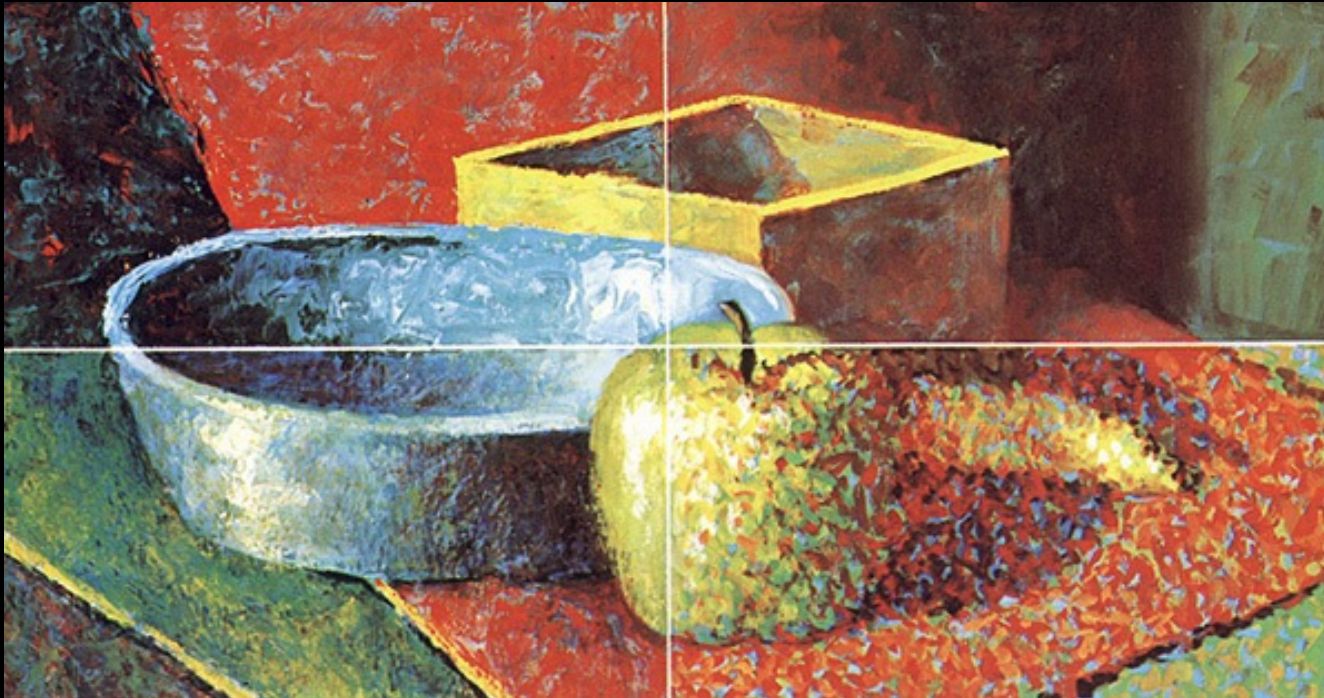
- Environment, Nature:
  - Gravel path
  - Tree bark
  - Bricks
  - Cat fur
  - Burlap sack
  - Stucco wall



# Texture in the “art world”?

- Refers to the surface quality, both simulated and actual, of artwork

“feel the texture with your eyes”



# Categories of Texture

- **Real Texture** is the actual texture of an object. Artist may create real texture in art to give it visual interest or evoke a feeling.
- **Implied Texture** is where a two-dimensional piece of art is made to look like a certain texture but in fact is just a smooth piece of paper.

**Student Samples** from previous semesters

ARK OPPPOSITE S

A  
N  
D  
4th

MONDAY

9 AM TO 11 AM

NET CLEANING PRO

DED OF POLICE













78























**Photo samples** from [FLICKR.com](https://www.flickr.com)



